

高雄國際機場
KAOHSIUNG INTL AD

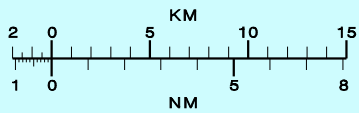
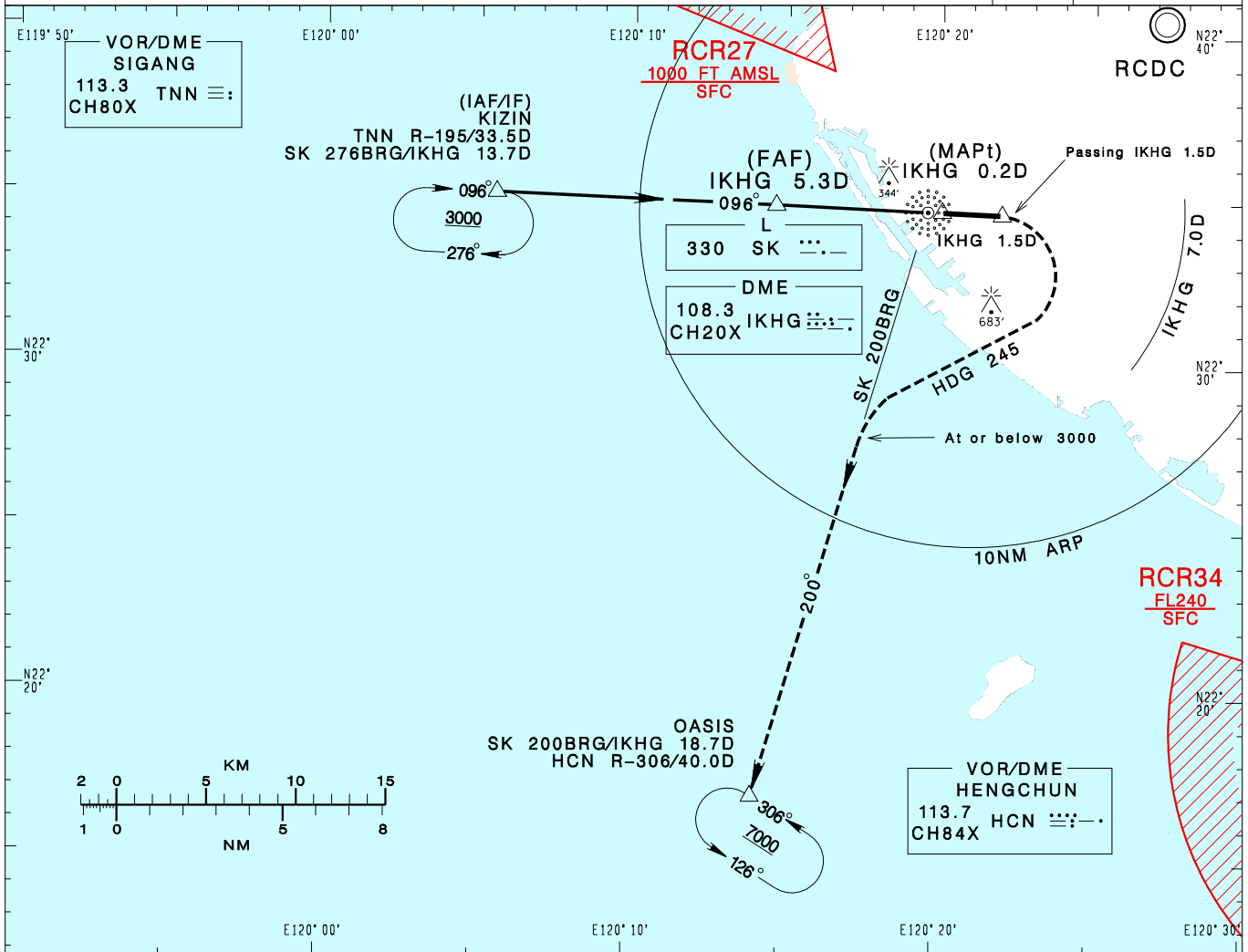
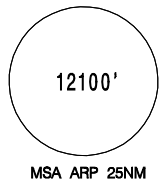
RCKH
NDB RWY09

| | | |
|------------------------------|------------------------------|---------------|
| KAOHSIUNG APP 124.7 125.7 | KAOHSIUNG TWR 118.7 120.7 | ATIS 127.8 |
|------------------------------|------------------------------|---------------|

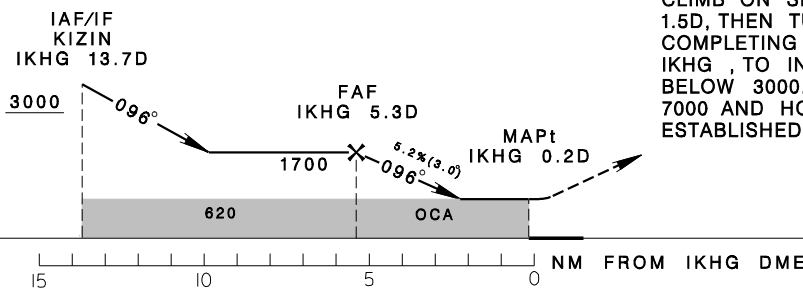
Apt Elev: 32' Rwy09 DTHR Elev: 21' Trans Level: FL130 Trans Alt: 11,000'

BEARINGS ARE MAGNETIC; DISTANCES ARE NAUTICAL MILES; ELEVATIONS, HEIGHTS IN FEET

VAR 4° W - 2023



| | | | | |
|------|------|------|------|--------------|
| 5DME | 4DME | 3DME | 2DME | DIST to IKHG |
| 1600 | 1290 | 970 | 650 | ADVISORY ALT |



MISSED APCH:
CLIMB ON SK 096BRG UNTIL PASSING IKHG 1.5D, THEN TURN RIGHT HEADING 245, COMPLETING THE TURN WITHIN 7.0D FROM IKHG, TO INTERCEPT SK 200BRG AT OR BELOW 3000. PROCEED TO OASIS, CLIMB TO 7000 AND HOLD. MAX 230KT IAS UNTIL ESTABLISHED ON TRACK TO OASIS.

MINIMA (OCA IN FT, VIS IN M, OCH IN FT)

| CATEGORY | A | B | C | D |
|-----------------------|-------------------------|-------------------------|----------------|----------------|
| STRAIGHT IN | 620/1200 599 RVR1200 | 620/1200 599 RVR1200 | 620/2000 599 | 620/2000 599 |
| STRAIGHT IN (ALS OUT) | 620/1600 599 | 620/1600 599 | 620/2700 599 | 620/2700 599 |
| CIRCLING | 630/1900 598 | 840/2800 808 | 1080/3700 1048 | 1080/4600 1048 |

NOTE
1. CIRCLING NOT AUTHORIZED NORTH OF RWY.
2. CAUTION: A 344-FT FERRIS WHEEL AT 310BRG 1.5NM FROM SK.
3. ATS SURVEILLANCE REQUIRED.

* DME REQUIRED

CHANGES: MSA AND MAG VAR UPDATED.